

RIDEL^{e-WS}

Our range of **enamelled** water heater Ridel/ews is specially designed for the storage and production of calories in domestic water. Save energy by optimizing the use of your water heater!

Application fields

- Residential field
- Supermarkets Hypermarkets
- Hotels
- Industries
- Farming

Installed on your hot water circuit, its allows you to accumulate calories. By installing Ridel/ews you will be able to :

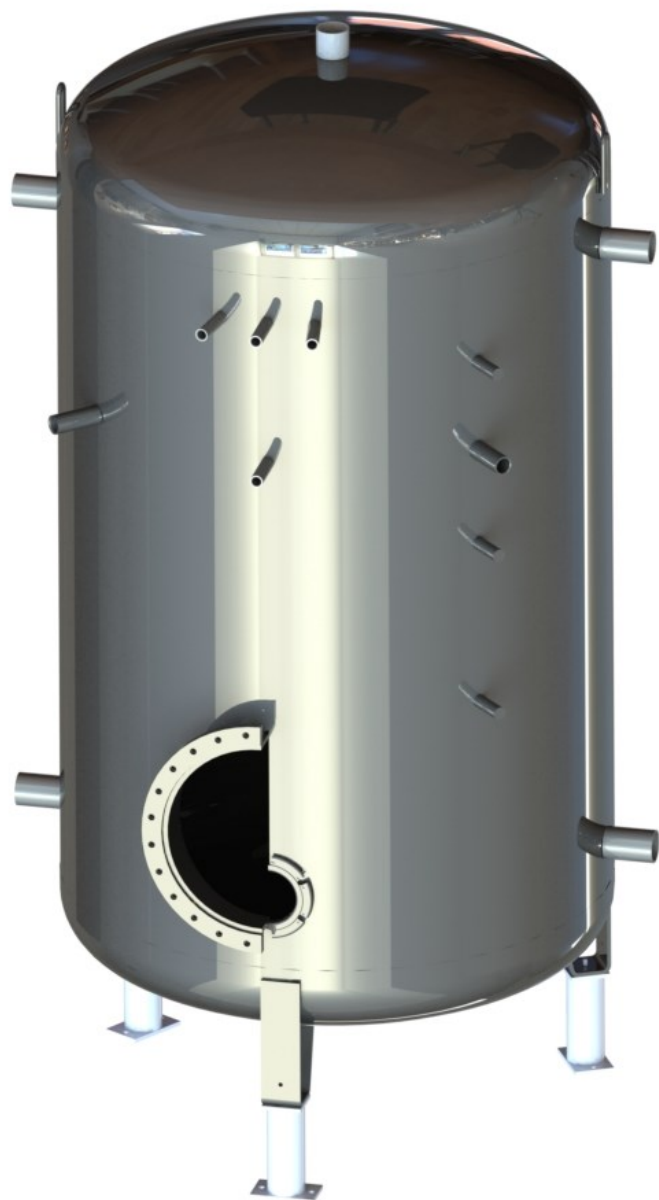
- Absorb consumption peaks
- Prevent the short cycles of your installation
- And thus decrease your energy consumption

Specificities

- Maximum working pressure of 7 bar
- Available with on the choice a handhole (DN110mm) or a manhole (DN400mm)
- Side connecting pipes for multiple and simplified connexions
- 3 sensors pockets
- Total draining in the the lowest point of the device

Accessories

- Draining kit with shut-off valve
- Insulating jacket Euro Class B-M1
- Thermometer



Delivery kit

- Plinths of 150mm
- Installation and maintenance manuals
- Equipment delivered on wooden pallet

Technical data

Liters	Ø Diameter Without insulation	H	L	A	B	C	ØDE	Weight with insulation (kg)
300	630	1 500	830	490	620	150	830	90
500	630	2 100	830	490	1 220	150	830	125
750	790	2 000	990	501	1 100	150	990	230
1 000	790	2 350	990	501	1 450	150	990	280
1 500	1 100	2 200	1 300	594	1 100	200	1 300	400
2 000	1 100	2 400	1 300	594	1 285	200	1 300	430
2 500	1 400	2 200	1 600	671	1 000	200	1 600	560
3 000	1 400	2 350	1 600	671	1 125	200	1 600	590

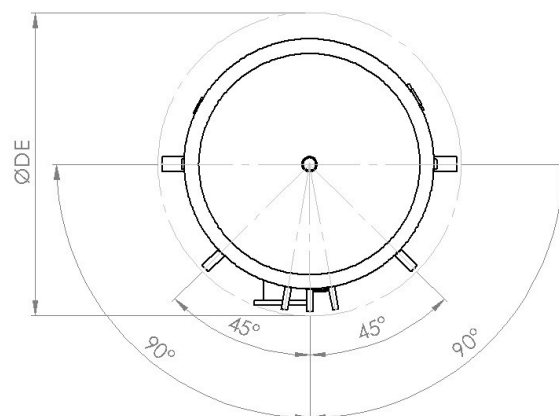
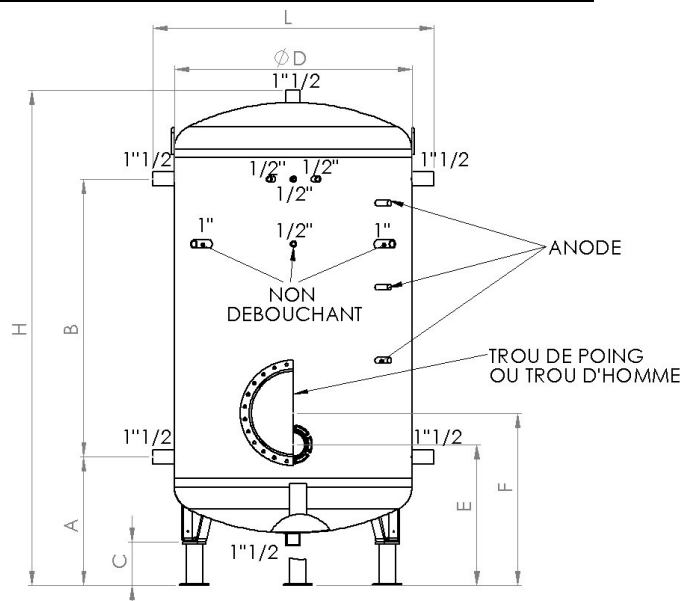
All dimensions are in millimeter.

These quotations are given for information purposes. A P&ID will be sent to you at the order.

This range is available of 4 000 liters has 20 M³ on request.

Any specific request little to be treated : several manholes, electric power going to 300 kW etc...

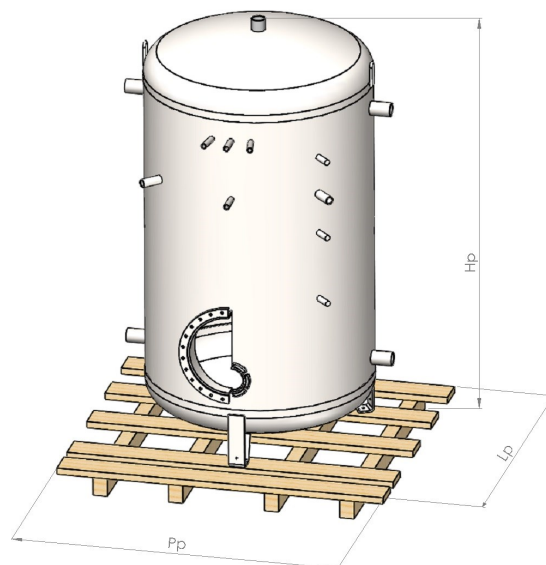
Plan



Delivery dimensions

LITERS	Lp	Pp	Hp
300	1 200	900	1 750
500	1200	900	2 100
750	1 400	1 300	2 000
1 000	1 700	1 500	2 300
1 500	2 000	1 700	2 250
2 000	2 000	1 700	2 350
2 500	2 200	1 900	2 250
3 000	2 200	1 900	2 350

All dimensions are in millimeters



Photos non contractuelles

Optional Electrical heater

These kits include the kit of three-phase cabling, the hood, the thermostat, the armored resistance, the joint and the counter flange

Armored resistance to install on a handhole - Flange 110mm

PRODUCT	DETAILS
Armored resistance	Electrical heater of 3kW (from 300 to 1000L)
	Electrical heater of 9 kW (from 750 to 1000L)
	Electrical heater of 15 kW (from 750 to 1000L)
	Electrical heater of 30 kW (from 750 to 1000L)



Armored resistance to install on a manhole Flange 400mm

PRODUCT	DETAILS
Armored resistances	Electrical heater of 9 kW
	Electrical heater of 15 kW
	Electrical heater of 30 kW
	Electrical heater of 45 kW
	Electrical heater of 60 kW



Heating time

CAPACITY In Liters	POWER in kW	Heating DELTA T 60K In hour, min
350	9	2h20mn
500	9	3h55mn
750	9	5h40mn
	15	3h30mn
	30	1h44mn
	45	1h19mn
1000	60	0h50mn
	9	7h27mn
	15	4h39mn
	30	2h20mn
1500	45	1h43mn
	60	1h09mn
	9	11h12mn
	15	6h59mn
1500	30	3h29mn
	45	2h41mn
	60	1h45mn

CAPACITY In Liters	POWER In kW	Heating Time DELTA T 60K In hour, min
2000	9	14h56mn
	15	9h20mn
	30	4h39mn
	45	3h27mn
2500	60	2h21mn
	9	18h42mn
	15	11h40mn
	30	5h49mn
3000	45	4h25mn
	60	2h57mn
	9	22h25mn
	15	14h00mn
3000	30	7h00mn
	45	5h15mn
	60	3h28mn

Photos non contractuelles

Steatite resistance to build on a manhole - Flange 400mm

These kits include the kit of three-phase cabling, the hood, the thermostat, the bornier, the armored resistance, the joint and the counter flange

PRODUCT	DETAILS
Steatite resistance	Electrical heater of 3 kW (diameter 486mm) - 1 x 3 kW
	Electrical heater of 6 kW (diameter 486mm) - 2 x 3 kW
	Electrical heater of 9 kW (diameter 486mm) - 3 x 3 kW
	Electrical heater of 12 kW (diameter 486mm) - 4 x 3 kW
	Electrical heater of 15 kW (diameter 486mm) - 5 x 3 kW
	Electrical heater of 18 kW (diameter 486mm) - 3 x 6 kW
	Electrical heater of 24 kW (diameter 486mm) - 4 x 6 kW
	Electrical heater of 30 kW (diameter 486mm) - 5 x 6 kW



Heating time

CAPACITY In liters	kW Power (number of resistances x kW)		Heating time DELTA T 60K In hour , min
750	(3x3)	9	5h40mn
	(4x3)	12	4h25mn
	(5x3)	15	3h30mn
1000	(3x3)	9	7h27mn
	(4x3)	12	5h49mn
	(5x3)	15	4h39mn
1500	(3x3)	9	11h12mn
	(4x3)	12	8h51mn
	(5x3)	15	7h00mn
	(5x6)	30	3h29mn
2000	(3x3)	9	14h56mn
	(4x3)	12	11h50mn
	(5x3)	15	9h20mn
	(5x6)	30	4h39mn
2500	(3x3)	9	18h42mn
	(4x3)	12	14h45mn
	(5x3)	15	11h40mn
	(5x6)	30	5h49mn
3000	(3x3)	9	22h25mn
	(4x3)	12	17h42mn
	(5x3)	15	14h00mn
	(5x6)	30	7h00mn